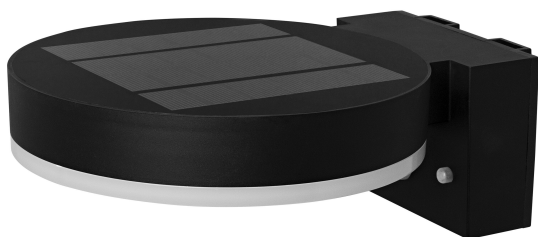




product_datasheet_title

ENDURA Style Solar Wall Sensor Single Circle 6W Black

ENDURA® STYLE SOLAR SINGLE CIRCLE | Solar-powered lantern luminaires with motion and light sensor, single circle



technical_data

ELECTRICAL DATA

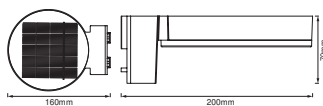
Nominal wattage	6.00 W
Nominal voltage	3,2 V
Mains frequency	0 Hz
Nominal current	1700.000 mA
Protection class	III
Operating mode	Battery

PHOTOMETRICAL DATA

Luminous flux	400 lm
Total luminous flux of contained light sources	600 lm
Luminous efficacy	67 lm/W
Color temperature	3000 K
Light color (designation)	Warm White
Color rendering index Ra	≥80
Standard deviation of color matching	6 sdcm
Photobiological safety group acc. to EN62778	RG1
Photobiological safety group acc. to EN62471	RG0

DIMENSIONS & WEIGHT

Length	200.00 mm
Width	160.00 mm
Height	70.00 mm
Product weight	400.00 g



ENDURA STYLE SOL WALL
CIRCLE 6W BK

MATERIALS & COLORS

Product color	Black
---------------	-------

Housing color	Black
Body material	Polycarbonate (PC) Acrylonitrile butadiene styrene (ABS)
Cover material	Polycarbonate (PC)
Mercury content	0.0 mg

APPLICATION & MOUNTING

Ambient temperature range	-20...+40 °C
Temperature range at storage	-20...+70 °C
Type of protection	IP44
Protection class IK (shock resistance)	IK03
Dimmable	yes
Mounting type	Surface
Mounting location	Wall
Application environment	Outdoor
LED module replaceable	Not replaceable
With light source	Yes

LIFESPAN

Lifespan L70/B50 at 25 °C	50000 h ¹⁾
Number of switching cycles	12500

¹⁾ t[h]: L70 / B50 @ 25 °C (Ta), t[h]: L80 / B10 @ 25 °C (Ta), t[h]: L90 / B10 @ 25 °C (Ta)

SENSOR

Type of sensor	Light / Motion
Sensor technology	Passive infrared (PIR)
Sensor detection angle	90 °
Sensor controlled switching time	15 s
Detection range of motion sensor	6 m
Detection threshold of daylight sensor	0...100 lx

BATTERY

Type of Battery	Lithium ion
Battery size [GMS]	18650
Number of included batteries	1
Nominal voltage of battery	3.7 V
Nominal capacity of battery	2200 mAh

Battery charging time	8 h
-----------------------	-----




EMERGENCY LIGHTING

Type of emergency light operation	Non-maintained
Luminous flux in maintained operation mode	-
Luminous flux in emergency operation mode	-

CERTIFICATES & STANDARDS

Standards	CE / EAC / UKCA
Luminaire with limited surface temperature, "D sign"	No

download_data

Documents and certificates	document_name
 User instruction	ENDURA STYLE SOLAR WALL SENSOR SINGLE CIRCLE
 Declarations Of Conformity CE	ENDURA STYLE SOL
 Declarations Of Conformity UKCA	Fixed LUM

logistical_data

product_code	packaging_unit	dimensions	weight	volume
4058075392762	Folding box 1	172 mm x 82 mm x 213 mm	495.00 g	3.00 dm ³
4058075392779	Shipping box 4	352 mm x 190 mm x 242 mm	2373.00 g	16.18 dm ³

logistical_data_text

disclaimer_title

disclaimer_text