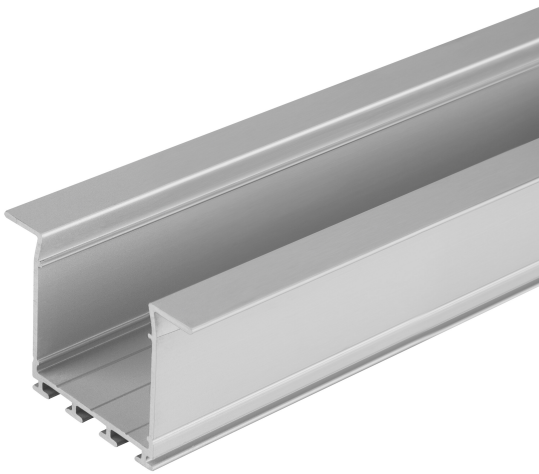




product_datasheet_title

LS AY -PW02/UW/39X26/14/2

Wide Profiles for LED Strips | Wide Profiles for LED Strips



technical_data

DIMENSIONS & WEIGHT

| | |
|----------------|----------|
| Length | 2000 mm |
| Width | 39.0 mm |
| Height | 26.0 mm |
| Product weight | 520.00 g |

COLORS & MATERIALS

| | |
|---------------|------|
| Product color | Grey |
|---------------|------|

TEMPERATURES & OPERATING CONDITIONS

| | |
|--------------------------------|--------------|
| Ambient temperature range | -15...+45 °C |
| Temperature range in operation | -15...+45 °C |






ADDITIONAL PRODUCT DATA



| | |
|----------------|--|
| Product remark | Can be combined with all LEDVANCE LED Strips including connectors and endcap |
|----------------|--|

LOGISTICAL DATA

| | |
|------------------------------|--------------|
| Temperature range at storage | -35...+85 °C |
|------------------------------|--------------|

Accessories Optional

| product_image | product_name | product_ean |
|--|-------------------|---------------|
|  | LS AY -PW02/EC/H | 4058075277427 |
|  | LS AY -PC/W02/D/1 | 4058075279421 |
|  | LS AY -PC/W02/C/1 | 4058075402348 |
|  | LS AY -PW02/EC | 4058075277397 |
|  | LS AY -PC/W02/D/2 | 4058075401983 |

| product_image | product_name | product_ean |
|--|-------------------|---------------|
|  | LS AY -PC/W02/C/2 | 4058075402164 |
|  | LS AY -PW02/MB | 4058075276659 |

download_data

logistical_data

| product_code | packaging_unit | dimensions | weight | volume |
|---------------|--------------------|----------------------------|------------|-----------------------|
| 4058075401471 | BAG 1 | 2,000 mm x 40 mm x 26 mm | 521.00 g | 2.08 dm ³ |
| 4058075401488 | Bundle 5 | 2,000 mm x 40 mm x 130 mm | 2606.00 g | 10.40 dm ³ |
| 4058075401495 | Shipping box 25 | 2,040 mm x 210 mm x 160 mm | 14404.00 g | 68.54 dm ³ |

logistical_data_text

disclaimer_title

disclaimer_text